

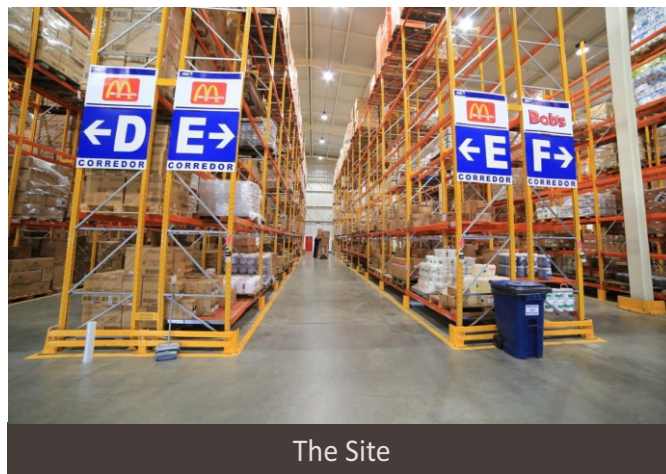
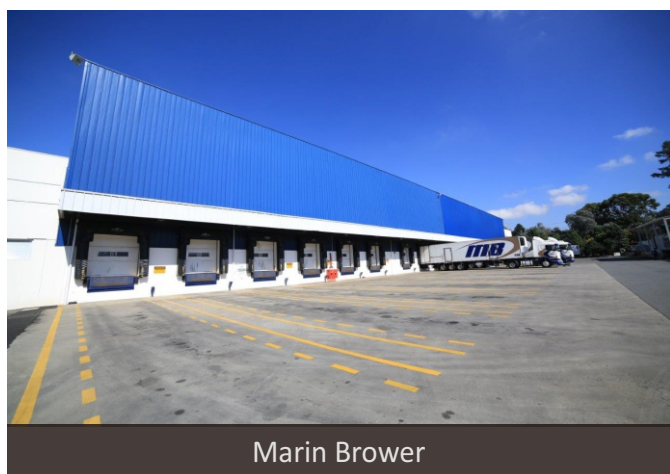


## MODERN'S POWER SAVER IN WAREHOUSE & LOGISTICS

### Introduction

The Martin-Brower Company, L.L.C. (Martin Brower) is and a logistics service provider delivering more than 500 million cases of food and service products to fast food restaurant chains in several countries. The company serves nearly one-half of the McDonald's restaurants in the world and is the largest supplier worldwide of distribution services to the McDonald's restaurant system.

The Martin-Brower in the Melbourne-Australia, as one of the important site, handles a variety of frozen foods including meat, vegetables and seafood. Service covers all the McDonald's restaurants in Melbourne with a fleet of 80 trucks and vans.



### The Challenge

Martin-Brower Company is committed to the improvement of energy efficiency across all sites and is addressing the business challenge of the rising cost of electricity to its operating costs. Martin-Brower continue to invest in sensible solutions that benefit both environment and financially. The issue facing martin-Brower was how to squeeze more efficiency and cost savings.

### Further Information

Please contact the Modern Group international marketing department on +86-577-88835717 or email: [modern@wzmodern.com](mailto:modern@wzmodern.com)



## MODERN'S POWER SAVER IN WAREHOUSE & LOGISTICS

### The solution

Modern Group conducted a full site survey, recorded the income voltage at the site as 243V and provided a techno-economical proposal with guaranteed saving results for the installation of a 800KVA unit. The installation reduced voltage to 221V.



### Results and Business Benefits

Installation of the Modern voltage optimiser has led to a reduction in voltage level to the site, from an average of 248V down to 223V. After installation received results of saving from Martin-Brower, during November and December totaled up to

**44,000kWh (AUD5,880)**

And what Martin-Brower like to say by the end of year:

“Our energy initiatives and site upgrades have saved about **AUD27,000** in electricity costs, and reduced carbon emissions by about **180 tons** in 2013.”

### Further Information

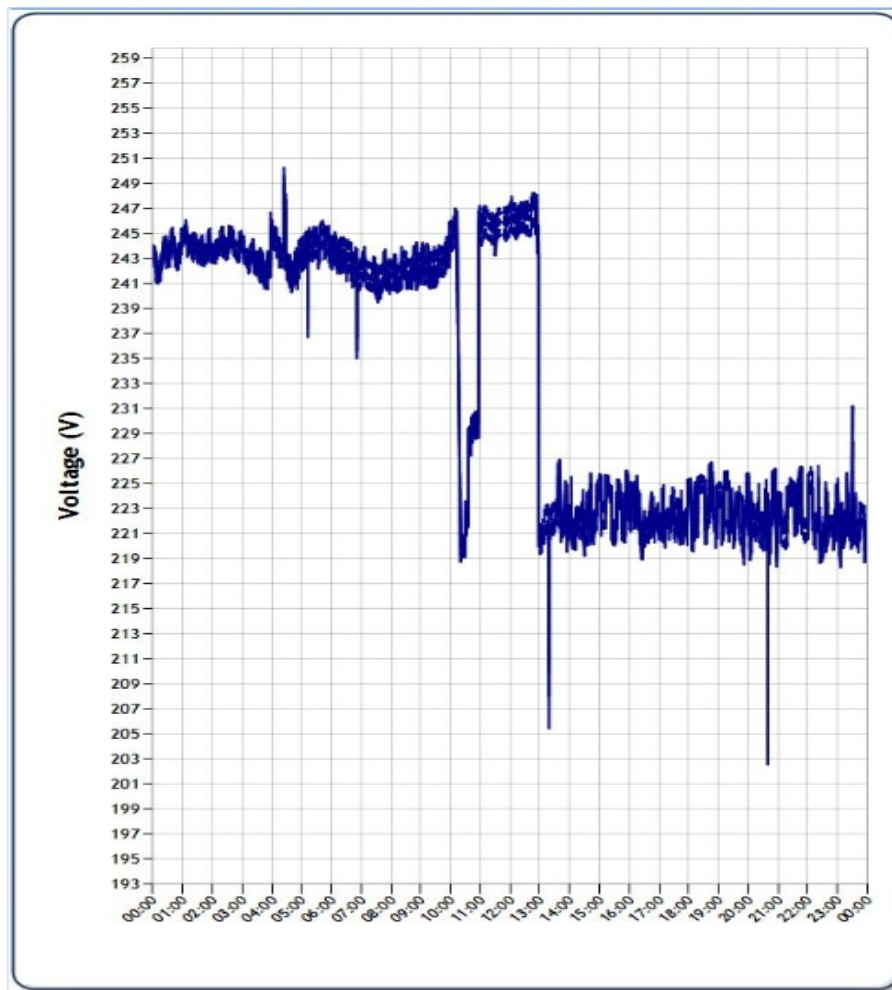
Please contact the Modern Group international marketing department on +86-577-88835717 or email: [modern@wzmodern.com](mailto:modern@wzmodern.com)



## MODERN'S POWER SAVER IN WAREHOUSE & LOGISTICS

### Voltage before and after

The graph shows the actual output voltage during 00:00-12:00. The voltage goes around 245V. The graph clearly depicts the unstable voltage from 10:00-11:00. After the installation of the voltage optimiser at 12:00, was big reduction. Voltage goes down to 223V. Since the install of modern voltage optimiser at Martin-Brower there has been no disruption to business whatsoever. On the contrary, life expectancy of equipment and reduced maintenance cost have become apparent, meaning they can store, manufacture and distribute for longer periods than before and, most importantly, in a more energy efficient capacity.



### Further Information

Please contact the Modern Group international marketing department on +86-577-88835717 or email: [modern@wzmodern.com](mailto:modern@wzmodern.com)